



INSTALLATION QUICK START GUIDE

November 2021 | 3725-24658-003C

# Polycom RealPresence Group 310, 500, or 700 System with Polycom EagleEye IV-L Camera

3725-24658-003B



## Get Help

For more information about installing, configuring, and administering Poly products or services, go to the Poly site, click Support, and choose the option best suited to your needs.

## Copyright and Trademark Information

© 2021 Poly. All trademarks are the property of their respective owners.

Plantronics, Inc. (Plantronics + Polycom, Now together as Poly)  
345 Encinal Street  
Santa Cruz, California  
95060

# Polycom RealPresence Group 310, 500, or 700 System with Polycom EagleEye IV-L Camera

The RealPresence Group 310, 500, and 700 system plus the EagleEye IV-L camera uses the same software as RealPresence Group Series 310, 500, and 700 system. The minimum software version is 5.1.1.

## EagleEye IV-L Camera

The RealPresence Group 310, 500, or 700 system and the EagleEye IV-L camera provide all of the features of RealPresence Group systems, plus support for the new EagleEye IV-L camera.



The camera supports the following features:

- Camera plug and play
- Camera update mechanism
- User interfaces to configure and control the camera
- Supports VISCA protocol for control
- PTZ (Pan, Tilt, and Zoom) control using remote control and tablet
- Camera configuration using web user interface
- White Balance control
- Exposure modes: Auto and Manual
- Iris Brightness control (Manual Exposure Mode)
- Backlight Compensation
- Video Modes: 1080p60, 1080p50, etc.
- Orientation (Normal and Inverted)
- Sleep/Wake Modes
- LED Status Support

### Camera and LED Light Status

The following table lists the LED indicators that display on the camera and the status associated with each indicator.

System State	LED
Power Off	No light
Power On	No light
In a Call	Green
Incoming Call	Green
UI Asleep	Amber
Booting	No Light
Soft Update	Blinks Amber during camera update
Shut Down	Amber

## Connect a Polycom EagleEye IV-L Camera to a RealPresence Group 310 or 500 System

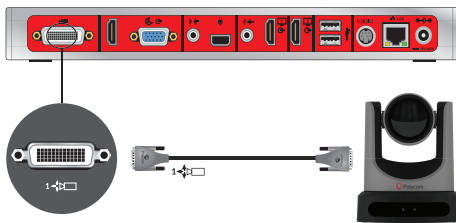
You can connect a Polycom EagleEye IV-L camera (part number 1624-24970-001 or 1624-24970-002) to a RealPresence Group 310 or 500 system as the main camera.

### Option 1:

- HDCl Analog Cable
- Power supply. Use when the HDCl cable is longer than 10 meters. Using an HDCl cable longer than 10 meters without a power supply reduces the power and will not provide enough current. Use only the approved power supply from Polycom (part number 1465-49729-001). Do not exceed 12 Volts at 5 Amps. Verify the polarity of the power supply as shown on the Polycom camera next to the power supply input.

Connect a Polycom EagleEye IV-L Camera to a Polycom RealPresence Group 310 or 500 System as the Main Camera

(Option 1):





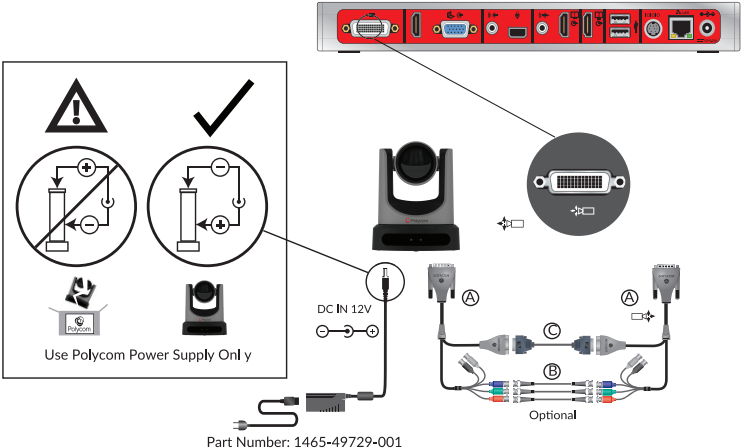
**Option 2:**

- A—Two HDCI Camera Break-Out Analog Cable
- B—Coaxial analog video cables
- C—DB-9 serial cable
- Power supply. Power supply is required when the camera is not connected directly to the RealPresence Group Series system using HDCI. Use only the approved power supply from Polycom (part number 1465-49729-001). Do not exceed 12 Volts at 5 Amps. Verify the polarity of the power supply as shown on the Polycom camera next to the power supply input.



Note: Polycom recommends this configuration when a custom cable length is required. The BNC and serial cables can be built to custom lengths.

**Connect a Polycom EagleEye IV-L Camera to a Polycom RealPresence Group 310 or 500 System as the Main Camera (Option 2):**



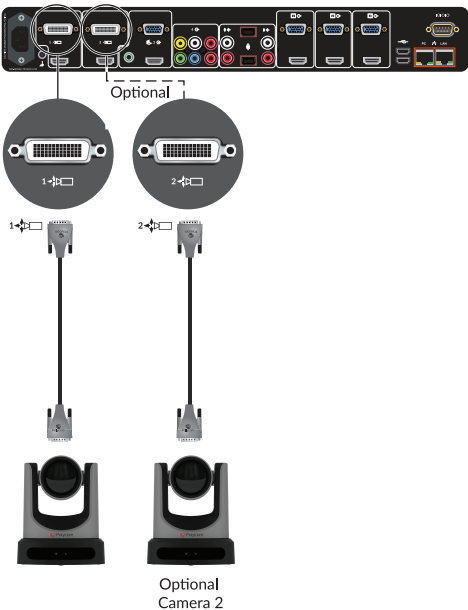
# Connect a Polycom EagleEye IV-L Camera to a RealPresence Group 700 System

You can connect a Polycom EagleEye IV-L camera (part number 1624-24970-001 or 1624-24970-002) to a RealPresence Group 700 system as the main camera.

### Option 1:

- HDCI Analog Cable
- Power supply. Use when the HDCI cable is longer than 10 meters. Using an HDCI cable longer than 10 meters without a power supply reduces the power and will not provide enough current. Use only the approved power supply from Polycom (part number 1465-49729-001). Do not exceed 12 Volts at 5 Amps. Verify the polarity of the power supply as shown on the Polycom camera next to the power supply input.

Connect a Polycom EagleEye IV-L Camera to a Polycom RealPresence Group 700 System as the Main Camera (Option 1):



**Option 2:**

- A—Two HDCI Camera Break-Out Analog Cable
- B—Coaxial analog video cables
- C—DB-9 serial cable
- Power supply. Power supply is required when the camera is not connected directly to the RealPresence Group Series system using HDCI. Use only the approved power supply from Polycom (part number 1465-49729-001). Do not exceed 12 Volts at 5 Amps. Verify the polarity of the power supply as shown on the Polycom camera next to the power supply input.



Note: Polycom recommends this configuration when a custom cable length is required. The BNC and serial cables can be built to custom lengths.

Connect a Polycom EagleEye IV-L Camera to a Polycom RealPresence Group 700 System as the Main Camera (Option 2):

