

ADPRO® Installation Guide

AFT-50DTCT-1 FastTrace / FastTx 'Down the Coax' Telemetry Module

Overview

This procedure describes the fitting of the AFT-50DTCT-1 'Down-the-Coax' telemetry module to the ADPRO FastTrace (Models 5020 and 5010) and the ADPRO FastTx (Models AFTX-10 and AFTX-20).

Related products

- ADPRO FastTrace
- ADPRO FastTx



Installing the AFT-50DTCT-1 'Down the Coax' Telemetry Module

NOTE: The AFT-50DTCT-1 'Down-the-Coax' Module should be installed by regional ADPRO service personnel only. It is NOT a field upgrade option.

Tools Required (not supplied): Philips #1 screwdriver, 7 mm hex nutdriver or socket, 5.5 mm hex nutdriver or socket.



Caution: Avoid carpets in cool, dry areas. Leave modules in their anti-static packaging until ready to be installed.

Dissipate static electricity before handling any system components by touching a grounded metal object, such as the unpainted metal chassis.

Antistatic devices, such as wrist straps and floor mats, should always be used.

Always hold a module by its edges. Avoid touching the contacts and components.

Take care when connecting or disconnecting cables. A damaged cable can damage the unit.

Prevent damage to connectors by aligning connector pins before you connect the cable.

Misaligned connector pins can cause damage to the unit at power-on.

When disconnecting a cable, always pull on the cable connector or strain-relief loop, not on the cable itself.

Installation Procedure

1. Shut down the FastTrace / FastTx by removing power to the unit.
2. Use the screwdriver to remove all the countersunk screws on the top cover.
3. Gently remove the cover.
4. Unclip the air baffle at point (1), and unplug the power cables (5) from all the HDDs.
5. Remove the two HDD cables from the motherboard, taking care to note which cable was plugged into which connector. If the cables are not replaced to the correct connectors, data loss will occur.
6. Release the HDD mounting frame (2) by using the nut driver to undo the lock nut (3). Slide the frame towards the front of the chassis to disengage. Remove the frame (2) and airflow baffle (7).
7. Remove only the 3 mounting screws (10), (11) and (12) from the connector board (refer to Figure 2). The remaining screws must be left in place.
8. Screw the two male-male PCB stand-offs supplied with the Down-the-Coax Module to the FastTrace / FastTx connector module at (10) and (11) (refer to Figure 2).
9. Screw the male-female PCB stand-off supplied with the Down-the-Coax Module to the FastTrace / FastTx connector module at (12) (refer to Figure 2).
10. Carefully place the Down-the-Coax Module so that the interface connector plugs through the pinholes in the connector module, ensuring correct orientation.
11. Gently press the Coax module so that its interface connector mates with the socket in the connector module and ensure it is firmly seated.
12. Secure the Coax module onto the stand-offs using the mounting screw and two nuts included (refer to Figure 3 for locations).
13. Replace the HDD mounting frame (2) and airflow baffle (7). Replace the lock nut (3) and tighten until firm. Plug power connectors into all HDDs.
14. Reconnect the two HDD cables to the motherboard, taking care to plug the correct cable into the correct connector.
15. Place new warranty sticker (8) over the HDD mounting frame and chassis.
16. Clip the airflow baffle in place at point (1) (refer to Figure 1).
17. Replace the top cover and insert all the countersunk screws.

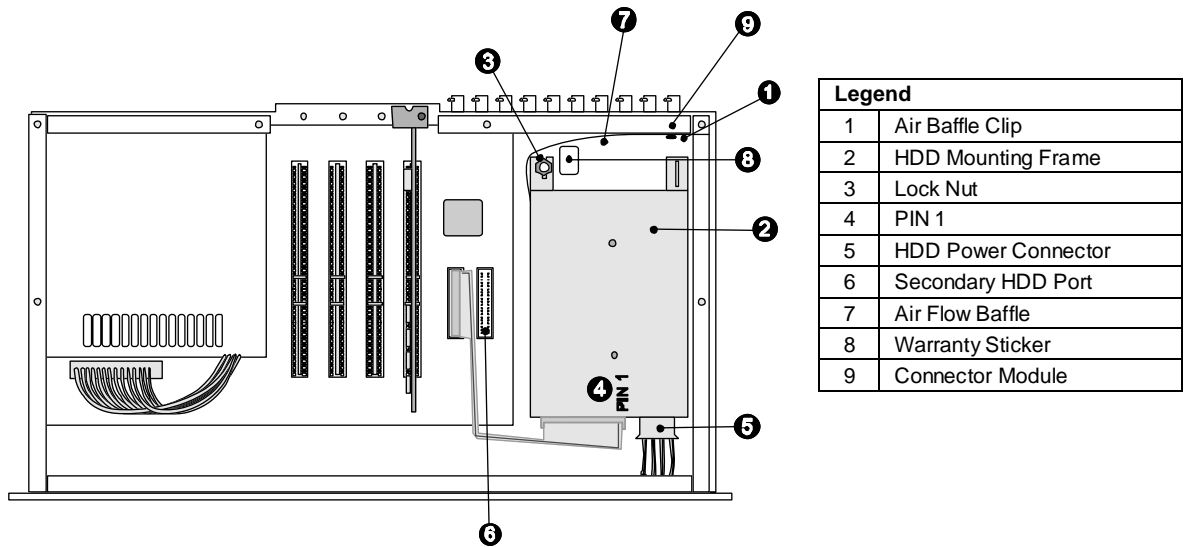


Figure 1 – Top view of chassis

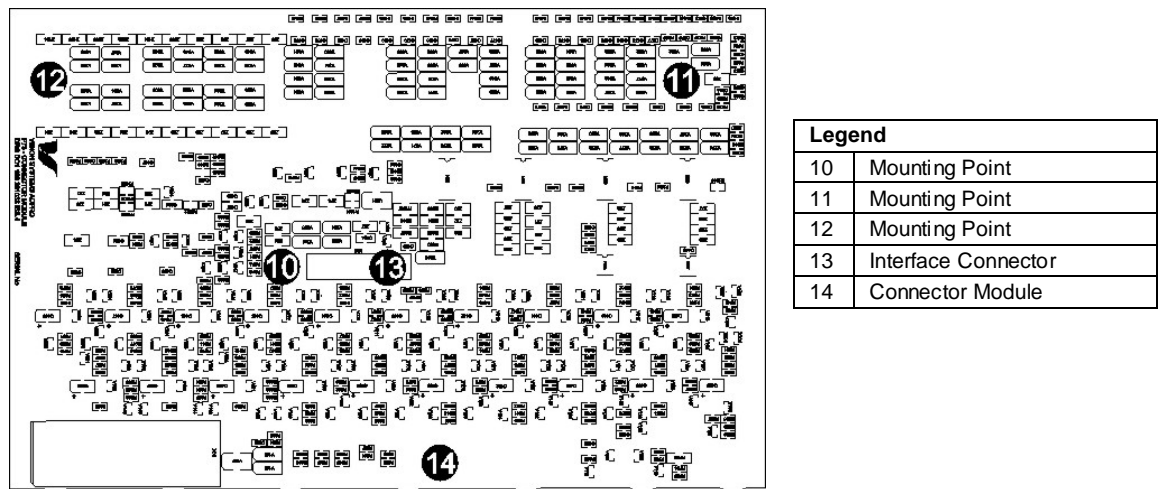


Figure 2 – FastTrace / FastTx Connector Module – Front View

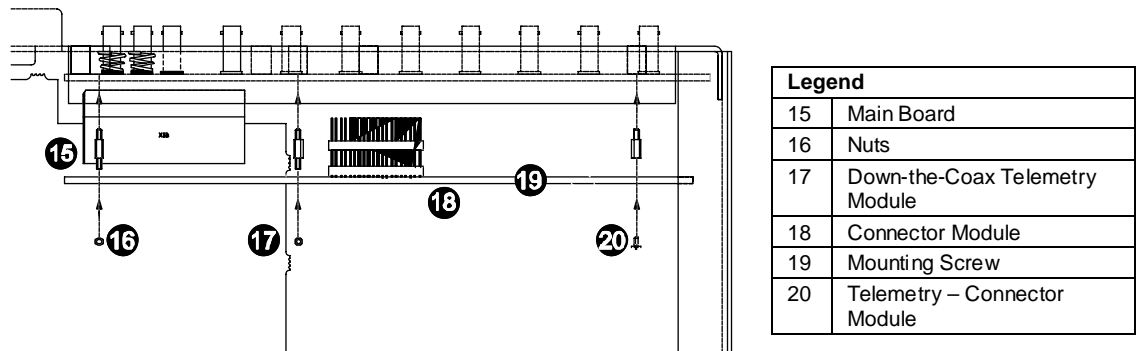
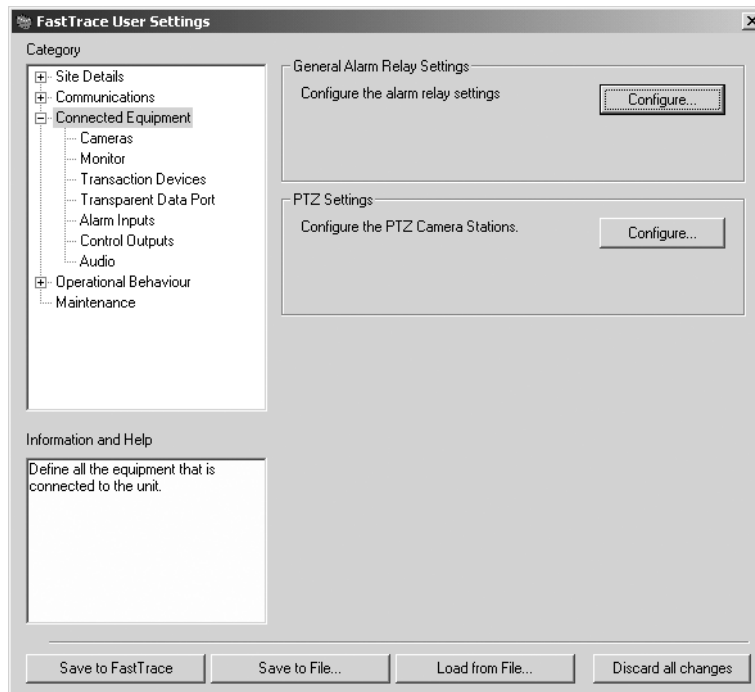
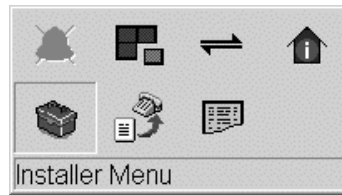


Figure 3 – FastTrace / FastTx Connector Module and Down-the-Coax Connector Module – Top View

After the 'Down-the-Coax' module is installed, apply power to the FastTrace / FastTx and wait until the boot sequence has been completed.

1. **Connect** to the FastTrace / FastTx using Video Central and select the **Installer Menu**.



2. Highlight **Connected Equipment**. The **PTZ Settings** area enables selection of the type of camera station attached to the FastTrace / FastTx.
3. Click the **Configure** button and select the Camera station being used.
4. To finish, **Save** the settings to the FastTrace / FastTx.

Note: The maximum allowable cable lengths are 500 m when using RG11 coax and 250 m when using RG59 coax.

www.xtralis.com

The Americas +1 781 740 2223 **Asia** +852 2297 2438 **Australia and New Zealand** +61 3 9936 7000
Continental Europe +41 55 285 99 99 **UK and the Middle East** +44 1442 242 330

The contents of this document are provided on an "as is" basis. No representation or warranty (either express or implied) is made as to the completeness, accuracy or reliability of the contents of this document. The manufacturer reserves the right to change designs or specifications without obligation and without further notice. Except as otherwise provided, all warranties, express or implied, including without limitation any implied warranties of merchantability and fitness for a particular purpose are expressly excluded.

This document includes registered and unregistered trademarks. All trademarks displayed are the trademarks of their respective owners. Your use of this document does not constitute or create a licence or any other right to use the name and/or trademark and/or label.

This document is subject to copyright owned by Xtralis AG ("Xtralis"). You agree not to copy, communicate to the public, adapt, distribute, transfer, sell, modify or publish any contents of this document without the express prior written consent of Xtralis.

