



Molynx Videmech Video

VIDEO MANAGEMENT SYSTEMS

- **Control Systems**
- **Pan & Tilts**
- **Domes**
- **Housings**
- **Flameproof**
- **IR Lamps**
- **Electronic Accessories**
- **Applications**



Surcha Domes



**Compact
Connoisseur**



Visilynx 2 Plus



**Optically Correct
Domes**



**Flameproof
Systems**



Pan & Tilts

Contents

4-5 Control Systems

- 6000 Series
- Visilynx 2 Plus
- Telemetry Receivers

6-7 Pan & Tilts

- Mustang 6 & 660 series
- Mustang 12 & 550 series
- 650 Series
- 600 Series

8-9 Domes

- 500 Series
- 500 Heritage
- Fast Dome
- Surcha Mini Dome

10-11 Housings

- Super Connoisseur
- 200 Series
- Compact Connoisseur

12 Flameproof

- Phoenix Pan and Tilt head & Housing

13 IR Lamps

14 Electronic Accessories

15 Applications

16 Contact Details



Molynx Videmech has been a world-leading innovator of video management systems and system components since 1973. It now offers one of the most comprehensive ranges of control systems, pan/tilt heads, housings, dome cameras and accessories available to meet the needs of the **CCTV** system integrator.

The company specialises in the development and marketing of high quality Video Control and management systems, and is a part of **Bewator Group AB**, a major International Access Security organisation based in Sweden.

BEWATOR GROUP

The group focuses on two strategic product areas: **Access Control** and **Video Control**. Development and manufacturing expertise in these areas puts **Bewator Group** at the leading edge of modern security practice by combining diverse technologies and systems to provide fully integrated security solutions.

Bewator Group has offices in Sweden, UK, Belgium, Netherlands, Germany and China, and is represented in over 40 other countries around the world by local reseller networks. In all these countries the company works closely with a network of carefully selected system integrators and installers.

The UK division, **Bewator Group Ltd**, is an active member of the **British Security Industry Association** and is an **ISO9001** approved company. All of our products meet international standards including **FCC**, **CE** and **BASEEFA**.

With **Bewator Group** solutions you can relax, safe in the knowledge that a 28 year pedigree of quality and excellence will provide you with practical, cost effective security solutions, wherever you are in the world.

For further information contact **Bewator Group Ltd**, Albany Street, Newport, South Wales, NP20 5XW, United Kingdom

Tel: +44 (0) 1633 821000, Fax: +44 (0) 1633 850893,

e-mail: Sales@bewator.co.uk

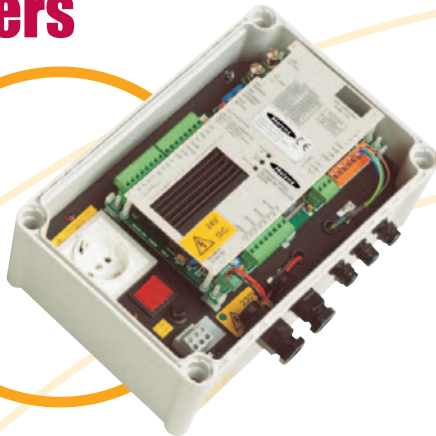
www.bewator.co.uk



BSIA
British Security Industry Association

Receivers

Precision variable speed control



RX217D - Variable speed for DC pan and tilt heads

- Variable speed allows operator precise control with rapid response and tracking capability
- Maximum speed is proportional to the degree of zoom - automatically improving system usability
- Compatible with continuous rotation pan & tilt heads with 2 wiper pan position feedback giving the shortest route to the scene. This improves response times to alarm events and has no pan preset 'dead zone'
- Ideal for use in town centre surveillance, stadia, prisons etc
- 'C' or 'D' type telemetry (see below)

99 Presets



RX217 - Fixed speed receiver for fixed speed AC preset heads

- 99 presets for precise targeting of views triggered by alarm activation
- Receiver automatically finds pan, tilt, zoom and focus end stops
- Compatible with all current Molynx telemetry controllers (600, 6000, Visilynx, CR2000)
- 'C' or 'D' type telemetry (see below)
- Ideal for industrial & commercial security applications

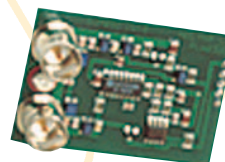
Can fit into camera housing



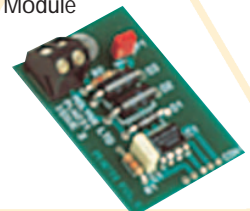
RX210 - For fixed speed AC pan and tilt heads

- Board only option for mounting in HSO 1-40 'Super Connoisseur' camera housing
- 'C' or 'D' type telemetry (see below)
- All functions can be activated at the receiver for test purposes
- Typically used in petrol stations, retail and light commercial applications
- Pan Tilt, Zoom, Focus and two installer configurable functions e.g. wash & wipe or lamps/aux

'D' Type Module



'C' Type Module



Telemetry Interface Options 'C' & 'D' type

Two options are available for the telemetry connection to the controller:

- 'C' Type (coaxial)

Video and telemetry signals travel down the same coaxial cable in different directions, at different frequencies. It can operate at distances of up to 1500m, depending on the cable specification

- 'D' Type (twisted pair)

Telemetry signals are transmitted over a twisted pair cable and can operate up to a distance of 3km, with suitably rated cable. 'D' type telemetry interfaces conform to RS485 and are compatible with a wide range of fibre optic, microwave and other transmission equipment.

All receivers can be specified for either 'C' type or 'D' type operation, and are compatible with all Molynx transmitters

Video Management Systems from Molynx Videmech

Control Systems

The Molynx Videmech range of camera control systems covers every market requirement from single camera to large distributed matrix systems. Flexible system configuration lets you use any suitable receiver with any controller making it easier to design practical systems that actually meet the users' needs, whilst avoiding system redundancy when future upgrades are required.

Telemetry control of the camera heads or domes, either via the coaxial cable carrying the video signal from camera to matrix or by a twisted pair control cable, is standard. This choice allows the most cost effective solution to be chosen for each installation and provides an economic upgrade path.

Modular design offers affordability even for modestly sized systems. The simple upgrade path allows for system expansion as the customer requirements change and their budget permits.



Supports distributed systems up to 256x64

6000 Series

Is the entry level control system for Molynx Videmech. Utilising the same telemetry components as the larger Visilynx system, the 6000 has the potential to meet your needs both today and in the future. Available in four models with a combination of the following features. Control signal RS485/232.

- Controls up to 32 cameras per unit
- Supports distributed systems up to 256 x 64 (Module mode)
- On screen text (except 2 monitor output versions)
- Up to 128 alarm inputs
- Over the coax and twisted pair telemetry control camera as standard
- Choice of telemetry receivers
- Up to 8 keyboards
- Version with integrated 16 channel colour duplex multiplexer available
- Programmable patrol tours
- Video sequences & camera text/time/date display
- PC interface available
- Control interface available to many domes
- Ideal for use in commercial/industrial applications such as retail outlets, petrol stations, leisure centres etc.

Powerful but simple to use



Visilynx II Plus

An industry by-word for high performance telemetry systems delivering control and video performance second to none.

- Operator Permissions by PIN
- Easy to set up by PC
- Extremely powerful, but simple to operate from custom designed, rugged, keyboard
- Fully Modular design to 256 cameras by 256 monitors
- Keyboard can control multiplexers, DVRs and VCRs
- User configurable response to alarms
- Global commands
- Serial Interface to 3rd party system components allows "tight" system integration e.g. domes, VCR, MUX, DVR
- Up to 32 keyboards
- Multi site control capability
- Ergonomic design
- Proven reliability
- Rugged construction
- Simple configuration
- Ideal for use in commercial/industrial/government applications such as town centres, hospitals, railways, ports, airports etc.

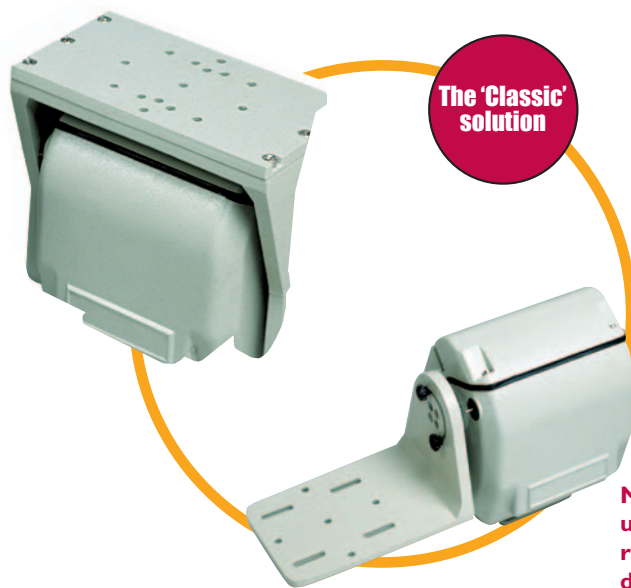


Pan & Tilts

The Molynx Videmech range of pan and tilt heads suit every type of surveillance applications. With proven reliability and performance there is a model that will fit even the most demanding security requirements without compromising useability, longevity and serviceability. Many of our pan and tilt heads have been installed for more than two decades and are still on active duty today.

Benefits

- Preset positioning standard on ac models
- Variable speed on all dc models
- Payloads from 3kg to 50kg
- Power source 110V, 230V, 24Vac & 12/24Vdc
- Side and top mount models available
- Upright and inverted operation
- Competitive performance and price
- Optional presets and autopan
- Up to 365 degrees rotation and continuous rotation option



The 'Classic' solution

Mustang 12 Series (ac and dc)

- Up to 12kg load capacity
- 365° pan rotation
- Side mount or over-the-top camera platform
- Recommended for cost-effective industrial/commercial applications requiring high reliability
- Recommended housing: HS01-35 Bracket: BP40



Small all-purpose unit

Mustang 6 Series (ac & dc)

- Up to 6kg load capacity
- Suitable for indoor & outdoor use
- Presets (optional on ac, standard on dc)
- Standard fixed and variable high speeds
- Weatherproofed to IP66
- Recommended housing: HS02, HS02/L

LIGHT DUTY Ideal uses: airports, stations and harsh environments where domes are not suitable.



Rugged construction

660 Series (dc only)

- Up to 3kg load capacity
- Variable speed
- Outdoor use
- Over the top mounting for housing



Continuous rotation versions available

MEDIUM DUTY Ideal uses: applications requiring high quality, durability and reliability in harsh environments.

550 Series (ac and dc)

- Up to 15kg load capacity
- Continuous rotation option (dc only)
- Integral Telemetry Receiver option (dc only)
- Over the top camera platform
- Standard fixed and variable high speeds
- Quick release plate for housing
- Recommended housing: HV01-35 Bracket: BP40



35kg Capacity

650 Series (ac only)

- Up to 35kg load capacity
- Side mount camera platform
- Inverted operation (optional)
- Recommended housing: HV01-35, HV01-50
- Recommended bracket: BP40

HEAVY DUTY Ideal uses: heavy load applications requiring high quality, durability and reliability in harsh environments.



Heavy load, variable speed options

600 Series (ac and dc)

- Adjustable end stops give up to 360° rotation
- Standard fixed and high variable speed models
- Over the top or side mount
- Compensators available for out of balance loads
- Recommended Housing: HV01-50/HV01-60
- Bracket: BP100

Pan/Tilt Brackets

- BP04 - wall bracket for 660 series (with adaptor). max load 15kg
- BP20 - wall bracket for Mustang 6 series, max. load 20kg
- BP40 - wall bracket for Mustang 12/550/650 series for medium housings, max load 40kg
- BA01C - corner adapter for BP20, BP40
- BP100 - wall bracket for 600 series and Phoenix pan & tilt range, for Mustang 12, 550 and 650 series with extended housings. Max. load 75kg

Takes 40kg payload



	660	Mustang 6	Mustang 12	550 Series	650 Series	600 Series
Payload	3kg	5kg	12kg	15kg	35kg	50kg
Voltage	12/24V dc	24 230V ac 24V dc	24/110/ 230V ac 12/24V dc	24V dc	24/230V ac	24/230V ac 24V dc
Sidemount		✓	✓		✓	✓
Top Mount	✓		✓	✓		✓
Weatherproof	IP67	IP66	IP66	IP67	IP67	IP68
Standard speed						
ac	10/4	6/3	6/3	6/3	6/3	6/3
(P/T°sec)		48/24	48/24	58/12		16/10
Optional speed						
ac			15/9			
(°sec)			24/12	32/12		32/10
Preset Option	✓	✓	✓	✓	✓	✓
Heater Option			✓		✓	✓
Continuous Rotation Option				✓		
Recommended Housing	HV02-20	HV02-20	HS01-35	HS01-40	HS01-40	HV01-50
Recommended Bracket	BP04	BP20	BP40	BP40	BP40	BP100

Video Management Systems from Molynx Videmech

Domes

For those installations requiring discreet and aesthetically pleasing solutions to security surveillance without compromising performance and flexibility, Molynx Videmech has the answer.

The Molynx Videmech Surcha & and Videmech 5" fast dome units combine fully functional cameras, pan tilt zoom and auto focus with our telemetry control electronics, in one unit. Whilst unlike conventional domes and pan-&- tilt units, the Videmech 500-Series domes, let you chose any camera/lens combination suitable for the application and conceal them without sacrificing optical quality, a common problem with many smaller dome cameras.

A blend of style and performance, the 5" diameter Fast Dome provides the perfect solution for most internal applications where covert surveillance is not required.

The Surcha Minidome gives the best of both worlds and is suitable for indoor and outdoor use in the most demanding locations.



500-Series Heritage

- Optically correct dome option
- Built in receiver option
- Straightforward access for service and maintenance
- Continuous rotation with 'shortest route' for fast alarm response
- Recommended external receiver: RX217D

Ideal for use in Town Centres, prestige sites and developments and sites with heritage status where aesthetic considerations are important.

Dome Brackets

- BD15W - Wall Bracket for use with all 500-Series domes (except Heritage)
- BD18H - Wall Bracket for use with 500-Series Heritage domes
- BD15P - Ceiling Pole kit for all 500-Series domes
- BDC05 - Ceiling Tile kit for D05RX/L Fast Dome
- BD05P - Ceiling Pole kit for D05RX/L Fast Dome

Optically correct versions



500-Series

- Optically correct option (18")
- 15" or 18" variants
- Fast variable speed
- Recommended external receiver: RX217D
- Built in receiver option
- Typical installations: banks, hotels, retail, libraries etc.

Optically Correct



Fast Dome

- 0.6 - 240°/sec pan speed
- Integral telemetry receiver for Visilynx/6000 Controllers
- Attractive design
- On-Screen camera set up
- 99 presets
- Typical installations: retail outlets, hotels, leisure centres etc.



Surcha Mini Dome

The new Molyntx Videmech Minidomes are designed to work with your security system to provide quality, reliable surveillance both indoors and out.

Molyntx Videmech has introduced a number of improvements to the Surcha Minidome including an "EasyFit" rapid mounting assembly, more attractive styling, integrated protocol support for the leading telemetry systems including our own Visilynx and 6000 control systems and added the option of control over the coax. This popular surveillance system now comes with a full warranty, even if used in "continuous tour" mode.

Benefits of the Range:

- Optical encoders for preset positioning gives better accuracy repeatability and longevity than conventional potentiometer technology
- Simple design and construction keeps costs low and performance reliable
- Low installation and commissioning costs as the unit works first time
- Competitively priced features
- Improved casing design in "Heritage" style puts the Surcha Minidome in a class of its own from conventional domes
- For Wall bracket, pendant pole and ceiling tile mounting
- High quality Swiss DC motors provide precise speed selection across the entire speed range
- Full proportional speed control is available to the operator regardless of the zoom position keeping the operator in control - not the electronics!
- Good quality images for evidential recording

Brackets

- BD08W - Wall mounting bracket for D08RXE/L Surcha Minidome
- BDC08 - Ceiling Tile kit for D08RX/L Surcha Minidome
- BD08P - 1.2 m long pendant-mounting bracket

Typical applications

Retail outlets, town centres, heritage sites, airports, banks, schools, Industrial/commercial sites, universities - almost anywhere!

Quality,
reliable
surveillance

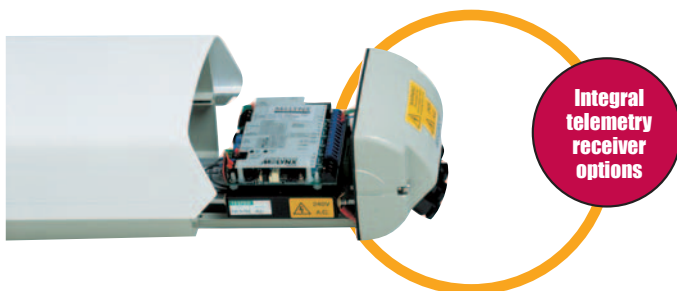


Video Management Systems from Molynx Videmech

Housings

The Molynx Videmech range of professional camera housings suit virtually all surveillance applications. Combining tough extrusions and castings, we have created aesthetically pleasing designs which are not only durable but are also easy to install and facilitate on-going servicing of the camera and lens assembly. Available in three standard sizes the range can accommodate most common camera/lens combinations. As an option we can supply housings with built in telemetry receivers for effective cable management and easy installation.

- Optional integral wiper with wash facility
- Weather proofing to IP66
- Suitable for all applications including docks and ports as well as town centres
- Environments with temperature extremes are catered for by advanced heater/blower options, even where exposed to direct sunlight



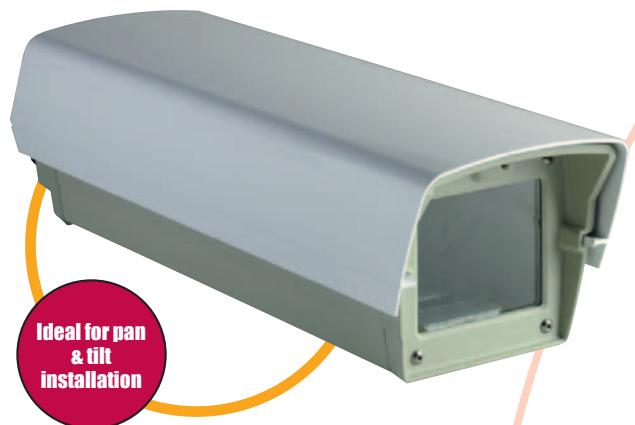
Super Connoisseur - HS01-40

- Ideal for pan, tilt and zoom installations with larger zoom lenses
- Suitable for use with built in RX210 series 10 function telemetry receiver
- Recommend system partners: Mustang 12 ac pan and tilt heads and 6000 series controller
- Fan cooling option



Super Connoisseur - HS01-25

- Suitable for most static camera installations



Super Connoisseur - HS01-35

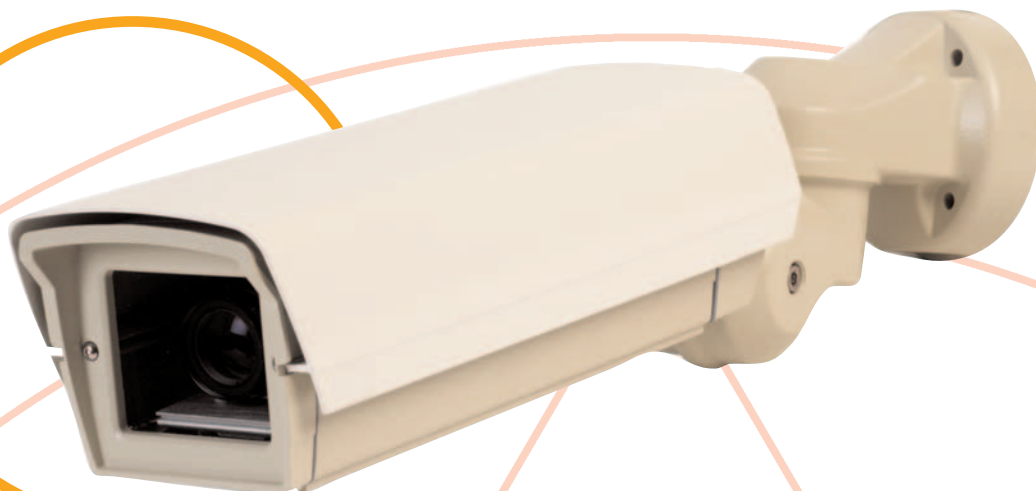
- Ideal for pan, tilt and zoom applications
- Recommended for use with RX217 and RX217D boxed telemetry receivers and P12-P / P12T/D pan and tilt head
- Wash-wipe option

Large/Medium Housings (HV01)

- Videmech 200 series
- Traditionally-styled folded aluminium construction
- A choice of sizes fit most camera/lens combinations
- Wash wipe option
- For harsh environments where durability is paramount

Recommended pan/tilt head: HV01-60 – 600 Series
HV01-50 – 650/550 Series

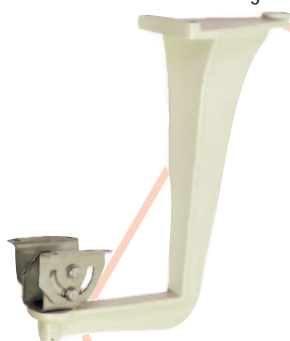
Full cable management



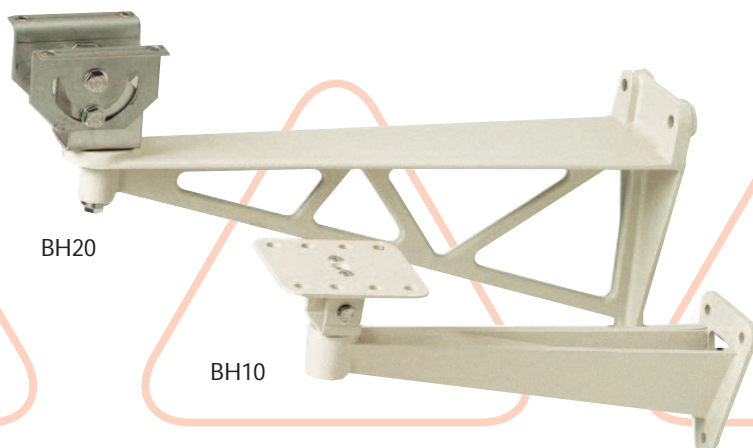
Compact Connoisseur - HS02

- **Full cable management**
 - Provides an aesthetically pleasing installation and protection for vulnerable cables at a very competitive price
 - Bracket allows low voltage cables to be insulated from power cables to fully comply with wiring regulations
- **Unique taper lock joint system (patent applied for)**
 - Allows accurate positioning of camera without the need to hold it in Position prior to locking
 - Locks securely with a turn on a single Allen bolt for quick installation
- **"Slide and hang" cover**
 - Provides easy in-situ access for installation and servicing
- **Optional tamper switch and vandal resistant screws**
- **Unique Ceiling adapter**
 - Enables mounting of the housing from a canopy or ceiling whilst maintaining full cable management and aesthetic quality
- **Conventional version**
 - For use with small pan/tilt heads and zoom lenses
(Recommended P & T head - Mustang 6 range)

BHC07



BH20

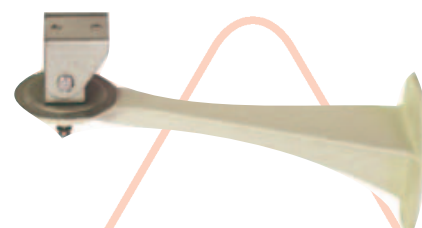


BH10

Housing Brackets

- BH03 - Wall bracket for use with HV02 range
- BHC07 - Ceiling bracket for use with HS01, HV01 (medium) and HV02 ranges. Suitable for loads up to 20 kg
- BH10 - Wall bracket for use with HS01-25 and HV02 ranges. Suitable for loads up to 20 kg NB: HV02 requires BAHV02 adaptor.
- BH20 - Wall bracket for use with HS01-35, HS01-40 and HV01 ranges
Suitable for loads up to 40 kg.

BH03



Flameproof

Molynx Videmech is a world leader in the manufacture of flame-proof housings and pan-&-tilt heads typically these are used in petro-chemical and other sites when video surveillance is required in areas where volatile gases are present.

Either your own, or Molynx Videmech supplied, cameras and lenses are factory fitted and each unit individually pressure tested and certified to BS5501 Part 5/EN50014/EN50018.

The Phoenix range is recognised and chosen internationally by those customers requiring the best engineering solution to this specialised application.



Phoenix 8

- 203mm diameter
- Certified to gas group IIB, zones 1 & 2
- Supplied with heater and sunshield
- Optional in-built ac telemetry receivers
- Weatherproofed to IP67

Recommended receivers

RX210 - 10 function

RX217 - 17 function presets



Wiper as standard

Phoenix 10

- 254mm diameter
- Certified to EEXd group IIB, zones 1 & 2
- Supplied with heater, sunshield, wiper and 10L washer
- Optional in-built ac telemetry receivers
- Weatherproofed to IP67

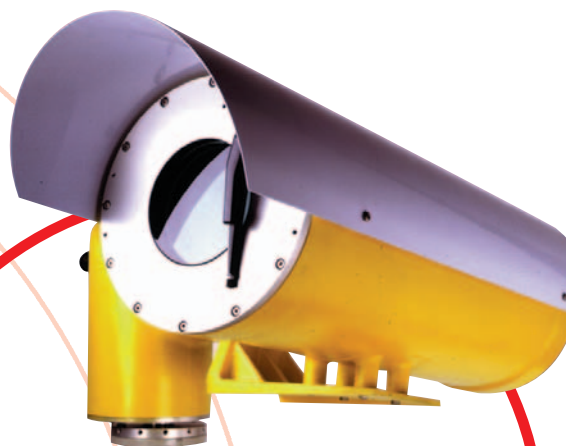
Recommended receivers

RX210 - 10 function

RX217 - 17 function presets

Recommended bracket

BP100 & BS100 swivel mount adaptor



50kg load capacity

Phoenix Pan & Tilt

- Certified for gas group IIB, zones 1 & 2
- Sidemount only
- 50kg load capacity
- Optional presets
- Weatherproofed to IP67
- Ideal uses: oil refineries, petrochemical industry, oil tankers, pharmaceutical

Recommended bracket:

BP100.

IR Lamps

IR lamps enable suitably sensitive cameras to operate at night. These are available with 715nm or 830 nm filters for covert or discrete operation.



Range up to 60m

IR300 – Medium power

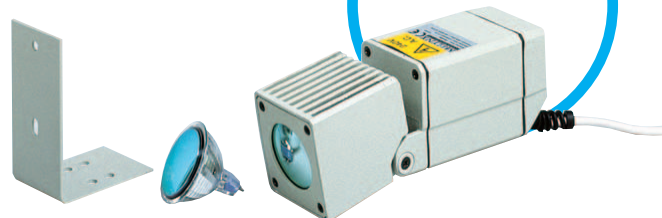
- Use for larger areas – 20-60 metres (spot bulbs)
- Separate photocell available for automatic operation

Compatible with Videmech heads



900 Series

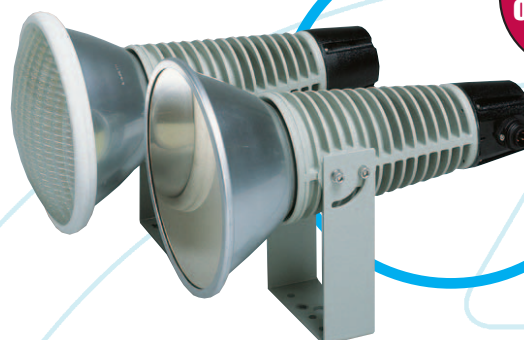
- Use for larger areas
- Operating range over 60m (spot bulb)
- Flood and spot options



Ideal for internal use

IR50 - Low Power

- Use for small areas, or to enhance individual 'spots'
- Integral photocell available for automatic operation
- Operating range up to 20 metres (spot bulbs)
- Suitable for both internal and external use



Range over 60m

IR600 – High power

- Use for larger areas
- Operating range over 60 metres (spot bulb)

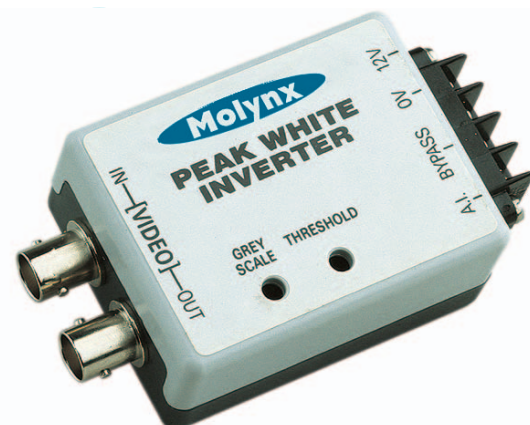
Replacement Bulbs

- Replacement bulb kits are available for all current and previous IR lamps



Electronic Accessories

Molynx Videmech provides a full range of those specialist installation items that make the difference between a valuable video monitoring system with clear, usable images and a collection of poor fuzzy images. From video distribution amplifiers that make installation easier, peak white inverters that enable a vehicle's occupants to be seen at night even when the vehicle's own headlights are aimed at the camera, through to those essential video transformers, the Molynx Videmech range is designed to enhance any systems' performance.



Can enhance high contrast image

Peak White Inverter – VID 149/D12

Reduces intensity of bright white lights (e.g. headlights), so that details around light (e.g. persons in car) can be seen. Should be used only with a video auto iris lens.

Removes ground loops



Video Transformer – VT 75-75

Achieves ground loop isolation on a video cable, i.e. removes earth loops, VT75-75 – 75 ohm coax in / 75 ohm coax out. Compatible with 'C' type telemetry.

16 x 5 buffered video outputs

2 buffered video outputs



Video Distribution Amplifier

- Receives video signal and provides multiple outputs, at same amplitude as input
- VID 151 operates from 12V dc supply and has 2 Video outputs
- VID 101 operates from 240V ac supply and has 5 Video outputs
- VID 101R operates from 240V ac supply and has 16 x VID 101, assembled to fit into a 19" rack

Removes C type telemetry



RF Rejection Unit – VT148

Removes 'C' type telemetry to stop interference to a video signal of a fixed or twisted pair controlled camera connected to a telemetry controller.

Power Supply 12VDC (500mA) – PSU12D

Additional or replacement power supply unit, suitable for powering remote keyboards.

Network Expander – TRX 482/D12

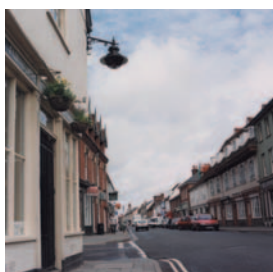
Can be used as an RS485 to RS422 converter or an RS485 repeater. It greatly expands the flexibility and networking capabilities of Molynx CCTV control and telemetry systems.

3 to 4 Wire Lens Adapter PCB PCBT234

Suitable for interfacing 3 wire lenses, with the 4 wire lens control outputs from telemetry receivers.

Government

- Gwent Police HQ
- HM Customs
- MOD
- RAF
- HM Prisons
- European Community Bldg (Geneva)
- SHAR Rocket Research Centre (India)
- French Nuclear Plants
- Inland revenue
- Paris Police HQ



Town and City Centres

- Aberdeen
- Auckland (NZ)
- Airdrie
- Bedford
- Blackpool
- Boston
- Bridgewater
- Camberley
- Cardiff Bay
- Colchester
- Crawley
- Grangemouth
- Inverness
- Leicester
- London
- Newbury
- Newport
- Plymouth
- Portsmouth
- Sheffield
- Stratford-upon-Avon
- Stevenage
- Stoke-on-Trent
- Warrington



Commercial

- Beijing Telecom
- Visa International
- Tate Gallery
- BT - Yellow Pages
- British Gas
- Rover
- BICC
- ICI
- Aintree Race Course
- Kuwait Conference Centre
- Construction Bank of China



Airports

- Glasgow
- Jakarta Indonesia
- Gatwick
- Heathrow
- Eastleigh
- Luxembourg
- Birmingham

Retail

- Tesco
- Sainsburys
- Asda
- Debenhams
- Marks & Spencer
- Sainsbury
- Alliance and Leicester

Transport

- London Underground - Jubilee Line
- Périphérique (Paris)
- Bangkok Traffic Monitoring
- Beijing West Railway Station
- Tehran Traffic Control (Iran)
- Channel Tunnel Freight Terminal
- Singapore NEL
- Hong Kong MTRC



Oil

- Conoco
- Shell
- Petrobras

Leisure

- Cardiff Millennium Stadium
- Nantes football Stadium
- St Etienne Football Stadium
- Lens Football Stadium
- Silverstone Race Circuit
- Bolton Reebok Stadium

Bewator Group Limited
Albany Street
Newport
South Wales
UK
NP20 5XW

Tel: +44 (0)1633 821000 Fax: +44 (0)1633 850893

e-mail: sales@bewator.co.uk www.bewator.co.uk

Bewator Belgium
Walderdonk 50
9185 Wachtebeke
Belgium

Tel: +32 (0)9 3458690 Fax: +32 (0)9 3458687

e-mail: sales@bewator-vss.be

Bewator Holland
Gangboord 7
4941 Re Raamsdonksveer
The Netherlands

Tel: +31 (0) 162 522682 Fax: +31 (0) 162 515086

e-mail: sales@bewator-vss.be

Bewator Sweden
P.O. Box 1275
SE-171 24 Solna, Sweden
Visiting address: Englundavägen 7

Tel: + 46 (0)8-627 00 95 Fax: + 46 (0)8-627 00 96

e-mail: info@bewator.se

Bewator South East Asia
12th Floor, Chartered Square Building
North Sathorn Road,
Bangkok 10500
Thailand

Tel: +66 (2) 6378032 Fax: +66 (2) 6378034

e-mail: molynx@loxinfo.co.th

Bewator China
Room 701, 7/F, 8# Building,
JuLong Garden, No 68 Xin Zhong Road
Dong Cheng District
Beijing

Peoples Republic of China

Tel: +86 10 65524386 Fax: +86 10 65524385

e-mail: bewator@public3.bta.net.cn